

H2Teesside Project

Planning Inspectorate Reference: EN070009

Land within the boroughs of Redcar and Cleveland and Stockton-on-Tees, Teesside and within the borough of Hartlepool, County Durham

Document Reference: 2.8 Indicative Electrical Connection Plans

The Infrastructure Planning (Applications: Prescribed Forms and Procedure) Regulations 2009 - Regulation 5(2)(o)

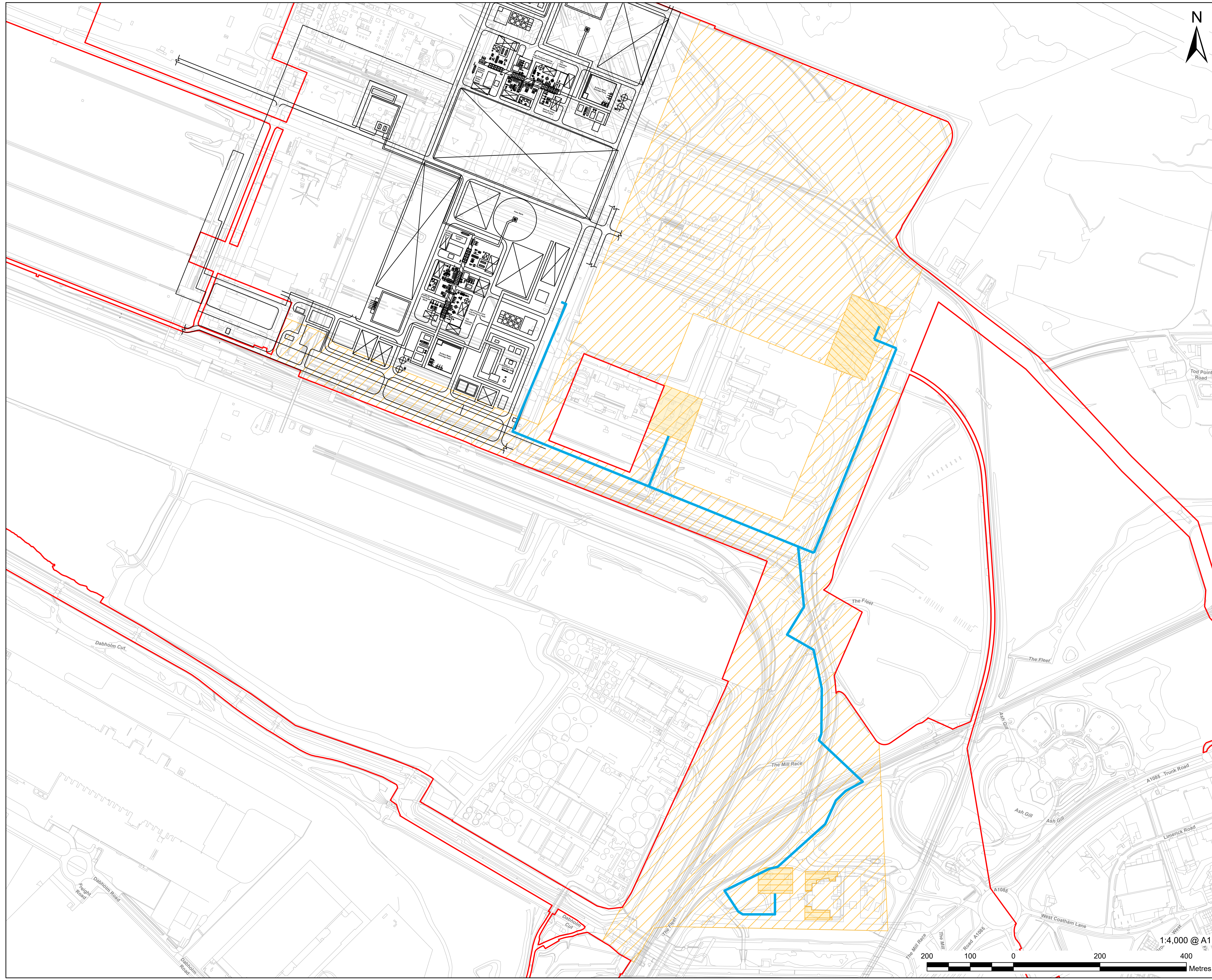


Applicant: H2 Teesside Ltd

Date: March 2024

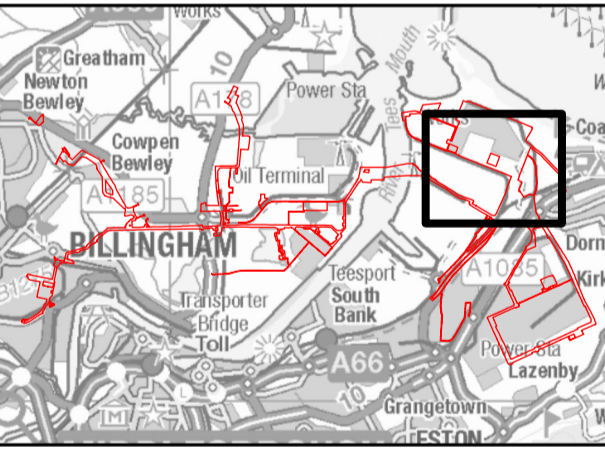
DOCUMENT HISTORY

DOCUMENT REF	2.8		
REVISION	0		
AUTHOR	MARYSE BUOT		
SIGNED	MB	DATE	22.03.24
APPROVED BY	JORDAN LEWIS		
SIGNED	JL	DATE	22.03.24



- LEGEND**
- Order Limits
 - Plot Plan
 - Work No. 3A - Electrical Connection Works
 - Work No. 3B.1 - Electrical Connection - Above Ground Installation Connecting Work No. 3A to Pellet-Sinter Substation
 - Work No. 3B.2 - Electrical Connection - Above Ground Installation Connecting Work No. 3A to Tod Point Substation
 - Work No. 3B.3 - Electrical Connection - Above Ground Installation Connecting Work No. 3A to a New Substation
 - Indicative Electrical Connection

Infrastructure Planning (Applications: Prescribed Forms and Procedure) Regulations 2009 Regulation 5(2)(o).



- NOTES**
- 1: Reproduced from Ordnance Survey digital map data © Crown copyright 2024. All rights reserved. License number 0100031673.
 - 2: Contains Ordnance Survey Data © Crown Copyright and database right 2024.

APPLICATION REFERENCE
H2T_March24_DCO_2.8_Rev0

ISSUE PURPOSE
FOR DCO APPLICATION

PROJECT NUMBER
60689030

DRAWING TITLE
Indicative Electrical Connection Plan

DRAWING NUMBER
Drawing 1 of 1



This drawing has been prepared for the use of AECOM's client. It may not be used, modified, reproduced or relied upon by third parties, except as agreed by AECOM. AECOM accepts no responsibility, and denies any liability whatsoever, to any party that uses or relies on this drawing without AECOM's express written consent. Do not scale this document. All measurements must be obtained from the stated dimensions.